

Grades for Concrete Curb <sup>and</sup> Gutter

Curb = 21" from prop  
offset Hubs = 19" from prop } Both sides

NE Cor. Wall + 23<sup>rd</sup> + H.I. - ELe Grades  
B.M. Hydrant 2.21 4301.46 4298.55

77+25.7 } N<sup>th</sup> S. Curb 4295.1  
77+32.7 } Prop lines E side Wall 6.331 95.129

NE Cor 23<sup>rd</sup> Lincoln + H.I. -  
B.M. Hydrant 1.365 4301.950 4300.585

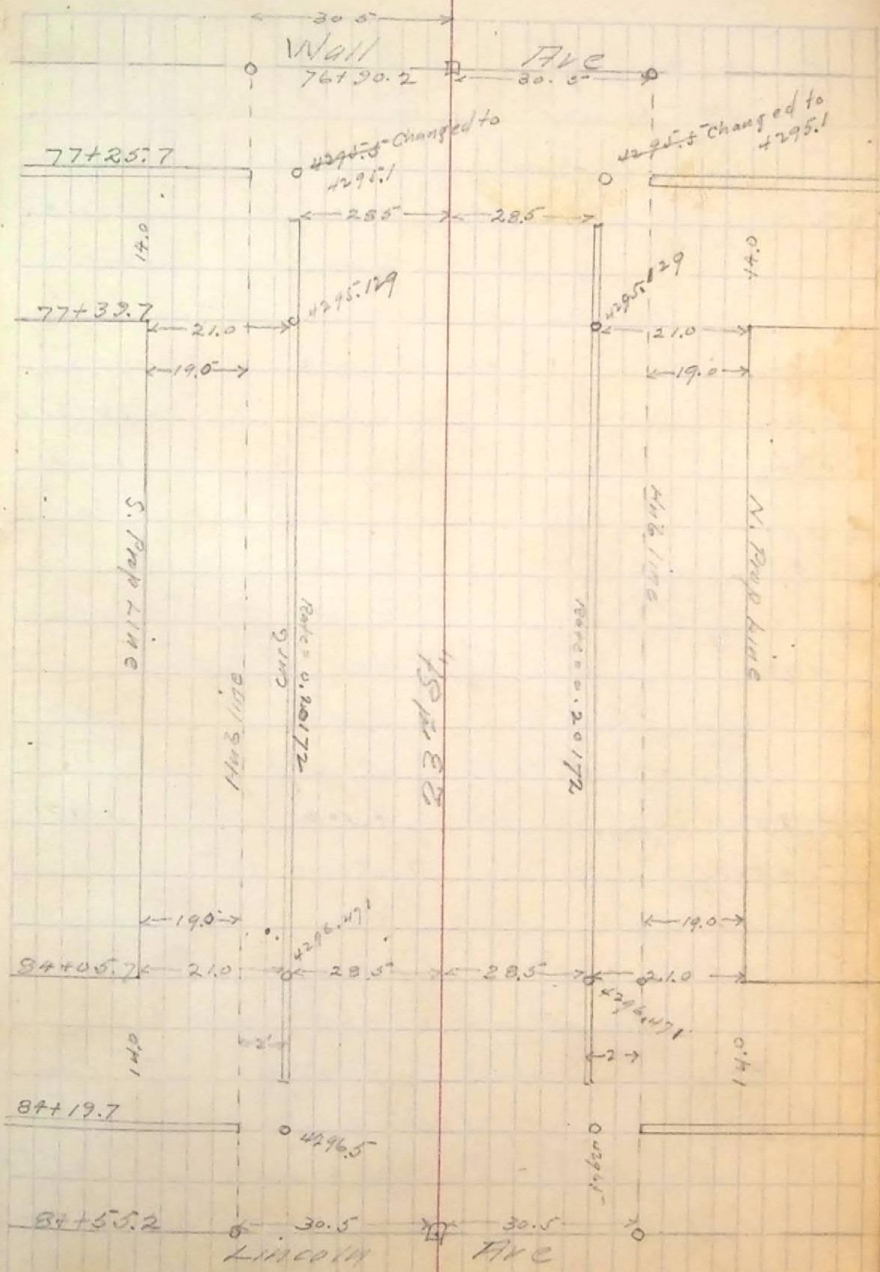
84+05.7 } Prop lines W. Side 5.479 4296.471  
N<sup>th</sup> S. Curb  
84+19.7 4296.50

NE Cor 23<sup>rd</sup> Lincoln + H.I. - B.M.  
0.455 4301.040 Grade rod 4300.585

84+05.7 } S. Side 4.569 4296.471  
to  
77+32.7

84+05.7 } N. Side 4.944 4296.471  
to  
77+19.7

23<sup>rd</sup> Street - Wall to Lincoln 1/



B.M. SE Gr Kiesel More house 4300.735  
4297.50 4292.50